



DESIGNED
IN
GERMANY



KETTLER

INSTRUCTION MANUAL
Quadriga Trailer



- 4** SAFETY INSTRUCTIONS
- 6** TECHNICAL DATA
- 6** SCOPE OF DELIVERY

ASSEMBLY

- 7** INSTALLING THE 20 INCH WHEELS
- 8** INSTALLING THE FRAME
- 9** INSTALLING THE TOW BAR
- 10** INSTALLING THE WHEEL GUARD
- 11** INSTALLING THE SAFETY FLAG
- 12** INSTALLATION OF THE REAR LIGHT
- 13** TECHNICAL DATA AND INFORMATION FOR THE REAR LIGHT

PREPARATION FOR THE JOURNEY

- 14** ATTACHING TRAILER TO THE BIKE
- 15** USE AS JOGGER
- 15** USE AS BUGGY
- 16** SEAT POSITION ADJUSTMENT
- 16** USE OF THE FIVE-POINT BELT BUCKLE
- 17** SUSPENSION ADJUSTMENT

USAGE

- 18** CHECKLIST BEFORE EACH TRIP
- 20** LOADING
- 24** TRIP
- 24** PARKING
- 25** MAINTENANCE AND CARE
- 26** ACCESSORIES
- 27** DISPOSAL



08948-460_blue/black
08948-480_limone/grey/limone
08948-500_lightblue/grey/lightblue
08948-520_grey/grey/black



08948-470_blue/black
08948-490_limone/grey/limone
08948-510_lightblue/grey/lightblue
08948-530_grey/grey/black

IMPORTANT: PLEASE READ THESE OPERATING INSTRUCTIONS CAREFULLY BEFORE USING THE PRODUCT AND KEEP THEM FOR FUTURE REFERENCE. NEVER USE A QUADRIGA CHILD CARRIER WITHOUT HAVING READ AND UNDERSTOOD THESE INSTRUCTIONS.

1. DESCRIPTION OF THE TARGET GROUP

- The child must be old enough to wear a helmet and be able to sit upright without help while driving. Ask a pediatrician if the child is younger than one year.
- The child's head including the helmet must not protrude above the upper frame.
- Riders and passengers should always wear well-fitting, approved bicycle helmets.
- Children must always wear safety belts when using the trailer.
- Do not use accessories that have not been approved by KETTLER.
- The rider must be over 16 years old and an experienced, strong cyclist. The traffic rules according to StvO must be observed.

2. DANGERS FOR VULNERABLE GROUPS

- Never leave children unattended in or around this product!
- Instruct children riding in the trailer not to bounce, rock or lean. Such movements may cause the trailer to lean or flip.
- When folding and unfolding this Quadriga child carrier, be careful not to pinch your fingers. To avoid injury, make sure that children are not near moving parts.
- Do not let your child play with this product.
- Never leave your child unattended.
- Make sure that neither your child nor his clothes, shoelaces or toys come into contact with moving parts.

3. BESTIMMUNGSGEMÄSSE VERWENDUNG

- This trailer is intended only for transport of children and cargo in the manner as described in the following pages of the owners' manual. Use of the trailer apart from these guidelines is not recommended, and may result in injury or damage to the trailer or the bicycle.
- The trailer is intended for use on paved roads. Use in other conditions may result in damage to the product or injury to passengers.
- This seating unit is not suitable for children under 6 months.
- Children must be able to hold their head up with their helmet on.
- The trailer may be used on approved bicycles and pedelecs.

4. NOT INTENDED USE

- This trailer is not designed for use with S-pedelecs or motorcycles.
- Do not make any changes to this Quadriga child carrier.
- Do not use this Quadriga child trailer near open fire or flames.
- Do not attempt to install other seating systems in this trailer. It is not designed for car seats, stroller seats, infant beds, or any other type of seating. Use of any accessories other than the original KETTLER equipment will void the warranty, and may result in damage to the trailer or injury to the passenger. Only replacement parts supplied or recommended by the manufacturer/distributor shall be used.
- This product is not suitable for skating.
- Never take this trailer off-road. It is intended for use on paved road surfaces. Use in any other conditions may result in damage to the product or injury to the passengers.
- Do not use the trailer in extreme weather conditions such as heat, cold, wind or rain. Passengers must be dressed according to the prevailing weather conditions.
- When folding and unfolding this Quadriga children's trailer, be careful not to pinch your fingers. To avoid injury, make sure that children are not near moving parts.
- Do not use for children exceeding the maximum permitted weight.

PLEASE NOTE THE FOLLOWING SECURITY STRATEGIES:

- Never assume you will be given the right of way.
- Do not try to predict the actions of car drivers.
- Do not travel on highways, busy streets, or in areas unsafe for bicycling.
- Avoid riding at night. If you must ride at night, use lights and bright, reflective clothing. Do not ride at night with children in the trailer. Before use, consult your local authorities to determine appropriate lighting and safety requirements to conform to traffic code.
- To prevent overturning your trailer, do not pull over curbs or holes or hit obstacles in the roadway.
- Do not turn sharply, because trailer may turn over.
- Always ride defensively.
- Always use the safety flag when pulling this trailer!
- Always use the restraint system.
- The occupants must always wear a tested helmet.

Max. load (child + luggage)	
Single-seater	35 kg
Two-seater	54 kg
rear luggage compartment	5 kg
Max. Weight (trailer + payload)	
Single-seater	51 kg
Two-seater	65 kg
Minimum age of children	6 Monate
Max. height Body size	117 cm
Max. height Travel speed	25 km
according to European standard	EN15918 / EN1888
Support load on the tow bar	2 -8 kg
Tyre pressure	2,8 bar

SCOPE OF DELIVERY

- Aluminium frame with Top cover
- Tow bar with trailer coupling
- 2 x 20 inch wheels
- Buggy wheel
- Jogger wheel
- Safety flag
- Adjustable handlebar
- 5-point belt buckle FIDLOCK
- Integrated sun protection
- Attachable splash guard
- Storage bag
- 2 Wheel guards with reflectors
- 2 Monkeylink Adapter for rear light (one taillight included in the scope of delivery)



INSTALLING THE 20 INCH WHEELS

Your Quadriga trailer uses simple and convenient push button quick-release wheels. To install the wheel, first push the button (Fig. 1) on the outside of the wheel hub, and insert the axle through the hanger bracket on the frame as shown (Fig. 2). Push all the way in and release the pushbutton. The wheel is automatically locked in place. Give each wheel a tug to make sure they are secure.



When assembling the trailer, make sure that the wheels are correctly and safely are fitted. If you are unfamiliar with the type of wheels used on this trailer, contact your dealer for instruction in the correct use of these machines. Only use tyres with road tread and not with BMX or Knobby tread.

The tyre pressure should be 2.8 bar/35-40 PSI. Check the air pressure before every use. If the air pressure is too high, the trailer may bounce off. or it's overturned.

To open the frame, place the bottom of the trailer on the ground and pull the upper frame tube upwards (Fig. 1). The frame is locked in place when you hear a «click» on both sides of the trailer frame. Check that the folding catches are engaged on both sides (Fig. 2).



WARNING - Risk of fingers being crushed

When this Quadriga child trailer is opened and closed, the fingers can be pinched. To avoid injury, make sure that children are not near moving parts.

To mount the tow arm you need the following tools (not included in delivery):

- a hexagon wrench, 5 mm
- an open-end wrench, 10 mm

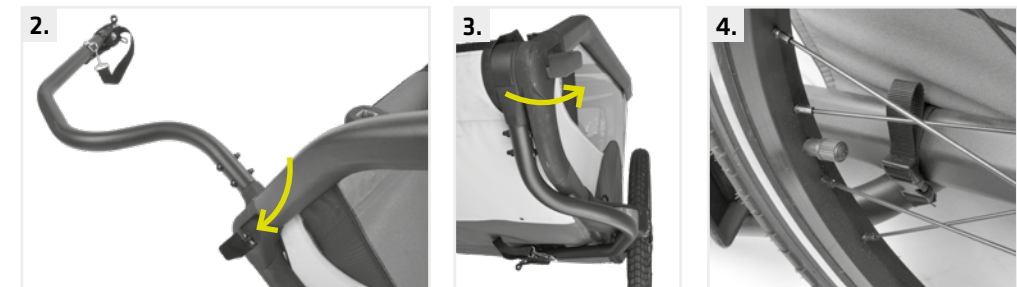
Place the tow arm on the module provided and tighten it with two screws and nuts (included in delivery) (Fig. 1).



Depending on how you use it, you can fold out the tow arm (to attach it to the towing bicycle) (Fig. 2) or fold it in (when using it as a buggy or jogger). To do this, open the lever (Fig. 2) on the side of the frame and turn the tow arm into the appropriate position.

Then the lever must be locked again for safe locking. The lever must then be locked again for safe locking (Fig. 3).

In addition, secure the folded drawbar with the safety loop provided for this purpose (Fig. 4). Always make sure that the fastening loops do not hang downwards.

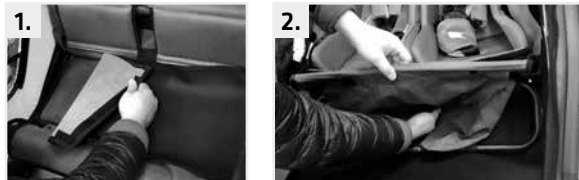


To mount the wheel guard, you will need the following tools (not included in the scope of delivery):

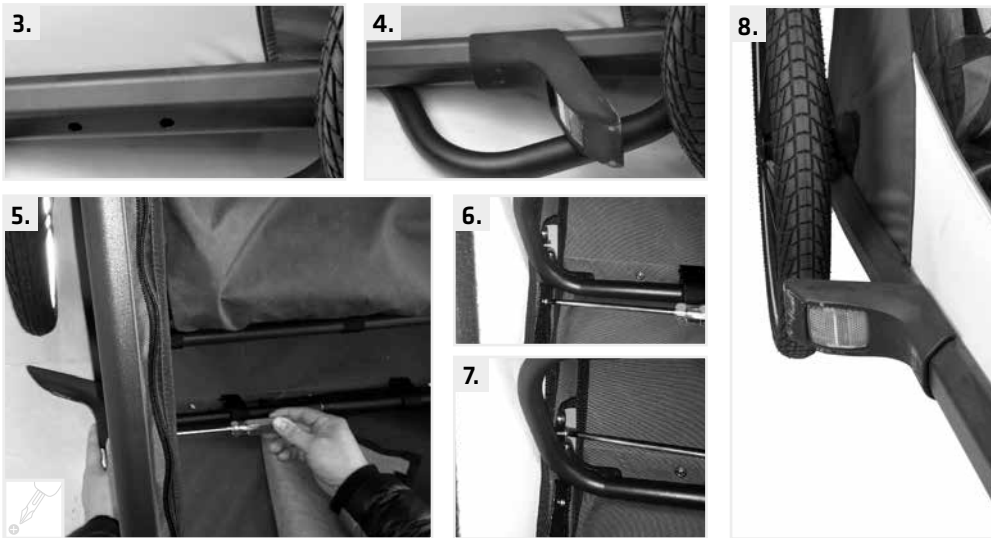
- a screwdriver

Your trailer is equipped with a wheel guard for added safety. The wheel guard helps distract the tyre from obstacles that can stop the trailer and cause an accident.

Before fitting the wheel guard, remove the dirt mat and remove the lower seat cover and the storage compartment under the seat from the frame (Fig. 1-2).



There are 2 holes in the front of the side frame, directly in front of the wheel (Fig. 3). Insert the wheel guard into the holes (Fig. 4) using the appropriate connectors. Screw two screws each from the inside (included in delivery) for fastening (Fig. 5-7).



After installation, carefully reattach all Velcro fasteners.



WARNING! ACCIDENT DUE TO DESTROYED FLAG

This flag is meant for use only with the trailer. This flag is not a toy. By a destroyed flag the trailer can be overlooked by the traffic. Failure to comply with this warning could result in serious injury.

Do not let your child play with the flag.

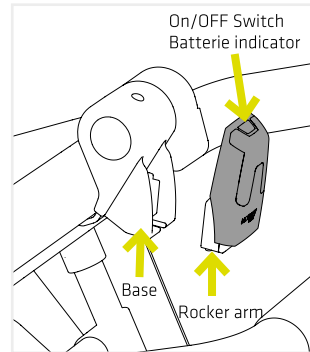
Assemble the flag and insert the end into the small button hole on the top of the handlebar (Abb. 1).



Your trailer is equipped with reflectors and a safety flag for maximum visibility in low light conditions, but if you plan to drive at night, you should install an approved lighting system.

To connect the MonkeyLink module to the trailer, place it with the integrated part of the holder close to the base until you feel the magnetic attraction. Engage the rear light on the base until you hear a „click“ sound from the mechanical latch (Fig. 2). Make sure that the rocker arm is fully engaged.

To release the MonkeyLink module, actuate the rocker arm (Fig. 3) and pull the module upwards out of the detent.



1.



2.



3.

TECHNICAL DATA AND INFORMATION FOR THE REAR LIGHT

- With 3 LEDs
- Tested and approved in accordance with the German Road Traffic Licensing Regulations (StVZO)
- With rechargeable Li-Ion battery (500mAH)
- With ON/OFF button
- Incl. charging cable
- With battery level indicator. The rechargeable front light corresponds to the German Road Traffic Licensing Regulations (StVZO) and fulfils the necessary light values until the battery level indicator appears.

PLEASE NOTE! If an LED fails, the entire light unit must be replaced!

- The reflector surface of the taillight must be oriented vertically to the road and at a right angle to the longitudinal axis of the road.
- In accordance with the German Road Traffic Licensing Regulations (StVZO) section 67, lights must be properly and firmly attached and constantly ready for use. Lights may not be covered.

ATTENTION! Instructions for charging your taillight

- There is a USB connector on the back of the light. Insert the micro USB cable connector and connect it to the adapter or computer. The charging status indicator flashes green while charging. Once the rear light is fully charged, the battery status indicator lights up green. The charging time is 2.5 hours.
- Remove the USB cable and insert the taillight with both tabs in the openings of the protective cover first and then allow the locking button to click in place.

SAFETY INFORMATION!

- Never look directly into the light.
- Do not expose the front light to intense heat.
- The batteries are fully charged when the battery status indicator is green.
- Do not charge the batteries for longer than 15 hours in one go.
- Do not use the product while charging.



E-waste do not belong in domestic refuse. As a consumer, you are legally required to return electrical waste professionally at a collection point.

ATTACHING TRAILER TO THE BIKE

Your trailer is designed to attach easily to just about any full-size bicycle. The hitch fitting must be attached to the rear axle of the bike. Do not attach to any cycle where it cannot attach to the axle. It is recommended that the bicycle(s) to which the trailer will be attached undergo a safety check by a qualified bicycle mechanic before attaching the trailer to it.

- Loosen the left rear axle nut (Fig. 1) so that the trailer coupling can be attached to the frame. If your bike does not have a quick release mechanism, you will need a 15 mm spanner (not supplied).
- Position the trailer hitch on the left rear axle of the bicycle frame.
- Tighten the axle nut firmly and check that the hitch cannot be released.
- Then place the safety loop around the frame (Fig. 2) and attach it to the eye of the drawbar (Fig. 3).



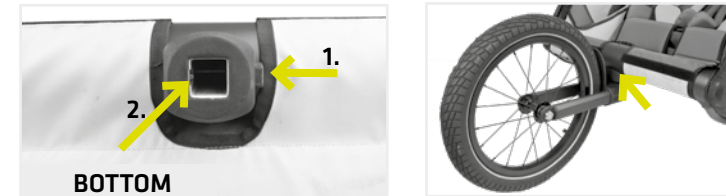
WARNING! Safety strap must be attach to the bike frame when using this product in trailer mode. QR snap pin must be in place and locked before riding.

REMOVAL OF TRAILER

1. Remove Safety strap by releasing O-ring.
2. Remove QR snap pin from hitch connection.
3. Pull trailer arm away from black hitch.

USE AS JOGGER

To mount the jogger wheel, turn the tow bar under the trailer as described on page 12. The jogger wheel is mounted in the bracket in the middle of the frame. To mount the wheel, insert the jogger wheel into the downward opening and allow it to engage. The wheel is securely mounted when the locking pin (2.) clicks into place.



To disassemble, press the button on the side of the housing (1.) and pull the wheel from the opening.

USE AS BUGGY

To mount the buggy wheel, rotate the drawbar under the trailer as described on page 12. The buggy wheel is attached to a bracket in the middle of the frame. To mount the wheel, insert the buggy wheel into the opening and let it engage. The wheel is securely mounted when the locking pin (2.) is clicked into place with an audible »click« clicks into place.



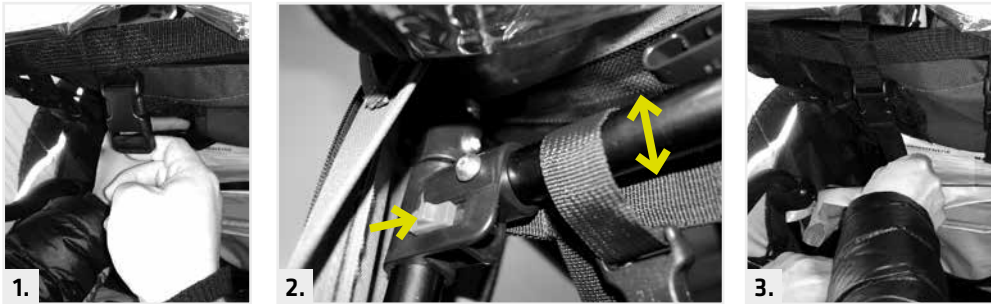
To disassemble, press the button on the side of the housing (1.) and pull the wheel from the opening.

**WARNING - ACCIDENT CAUSED BY BLOCKED TOWING WHEEL**

If the seat position is set incorrectly, a passenger with an outstretched leg can touch the towing wheel. An accident with injuries can result.

Adjust the seating position so that a passenger with an outstretched leg cannot reach the drawbar wheel.

With your KETTLER Quadriga child trailer you can adapt the backrest optimally to the needs of your children. You can adjust the sitting position in three positions. First loosen the strap (Fig. 1). Then unlock the red sliders on the right and left and move the crossbar to the desired position until it clicks into place (Fig. 2). The strap must be readjusted then (Fig. 3).



USE OF THE FIVE-POINT BELT BUCKLE

The FIDLOCK 5-point harness is a unique magnetic-mechanical buckle with Single-handed operation. It can be opened effortlessly by sliding sideways and closes easily and automatically thanks to the magnets.

Loosen the straps and place your children on the seat. Adjust the upper straps so that they fit snugly over your child's shoulders. The crotch strap buckle should be directly under your child's navel. Adjust the straps so that there is a finger's width of air between the child and the strap. The straps should be tight.

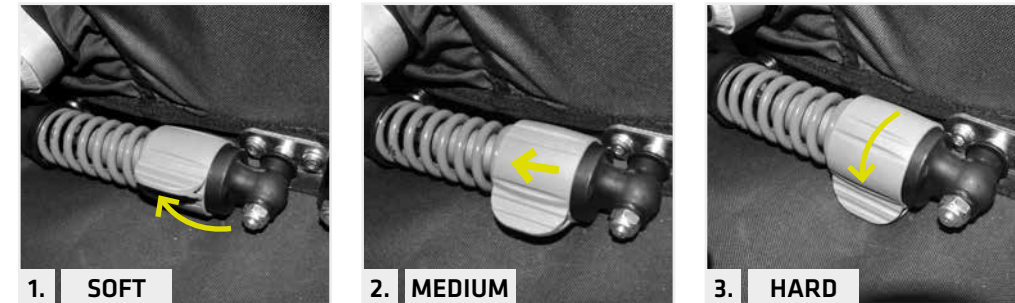
**WARNING - ACCIDENT DUE TO INCORRECT SUSPENSION ADJUSTMENT**

Different spring travel can have a negative influence on the driving behaviour. An accident can be the result.

Always set both springs to the same level.

The suspension of your KETTLER Quadriga child trailer has to be adjusted in three steps to the load weight (passengers and luggage). To adjust, turn the knob on both sides to the appropriate position.

- A soft spring adjustment for light weight can be achieved by turning the knob with the tab upwards (Fig. 1).
- A medium spring setting for medium weight can be achieved by turning the knob with the tab to the side (Fig. 2).
- You can achieve a harder spring setting for heavy weights by turning the knob with the tab pointing downwards (Fig. 3).



- Check the condition of the bicycle and trailer before each ride.
- To avoid serious injury or death, children must always wear the seat belt and shoulder straps.
- Check the wheels regularly during and before each use to ensure that they have not come loose. Otherwise, you or your child may be seriously injured.
- Check tire air pressure. Always maintain between 35 and 40 PSI or 2,8 bar
- Check that the trailer coupling is tight.
- Make sure that all locking devices are engaged. The frame must be locked and the spring bolt must be engaged on both sides.

To ensure that the frame is locked, push the rear frame tube forward to check. If the frame moves forward to fold, the frame is not safe. Then repeat the procedure described in the chapter Mounting the frame and pull with some force until the frame clicks into place with an audible »click«.

- Before each ride, make sure that the Quadriga child trailer does not interfere with the brakes, pedals or steering of the bike.
- Check the lever on the drawbar regularly before and during each use to ensure that it has not come loose.
- Make sure that the safety flag of the trailer is mounted.
- Make sure that an approved lighting system is in place and charged.
- Never drive your trailer at night without an approved lighting system.
- Before each ride, make sure that the jogger or buggy wheel is securely mounted. Failure to do so may result in injury to you or your child.
- Make sure the parking brake is released before riding.

If the Quadriga child trailer is used as a bicycle trailer, the buggy wheel must never be mounted in the operating position (wheel down).

1. Always activate the parking brake when children get in and out and when parking the Quadriga child trailer.

The trailer has a foot-operated parking brake for use in jogger/buggy mode. The brake is pre-assembled at the factory.

ACTUATION OF THE PARKING BRAKE

To operate brake, simply put your foot on link brake and push down, then it locked, and put your foot under link brake and raise up to unlock your brake.



2. Unfold the trailer.



WARNING! - DANGER OF CRUSHING THE FINGERS

When this Quadriga child trailer is opened and closed, the fingers can be pinched. To avoid injury, make sure that children are not near moving parts.

3. Use of the storagecompartment



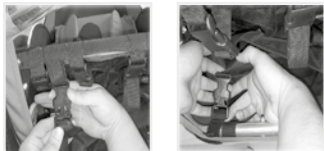
WARNING - Injury from unsecured baggage

Misdistribution of heavy baggage may cause the trailer to become unstable. An accident with serious injuries may result.

Distribute the weight of luggage carefully and evenly.

The trailer has a rear storage compartment. Distribute the items carefully and evenly. Objects can cause the trailer to become unstable. Failure to observe this warning may result in serious injury to your child. This is only intended for items weighing up to 5 kg.

A storage bag is included in the scope of delivery. Install it by connecting the buckles together.



4. Secure all luggage

Position the load as low as possible and center it in the trailer. All additional equipment should be placed backwards. All loads should be secured so that they cannot move.

5. Loading the passengers.

- The maximum payload for this Quadriga child trailer is 35 kg (single seater) / 54 kg (two seater) including occupants and luggage. The trailer will become unstable if the load recommended by the manufacturer is exceeded. 45 kg total weight or 30 kg nominal load must not be exceeded.
- At full load, the drawbar load measured on the hitch should be between 3-6 kg. This can be checked by getting on a personal scale. Note the indicated weight. Stay on the cart and lift the drawbar to the height of the attachment on the bicycle. The indicated weight must now weigh 3 to 6 kg above the first measured weight.
- When loading the trailer, make sure that the parking brakes are applied.
- When using the Quadriga 2-seater child trailer with only one child, the child should sit on the right side.
- The maximum passenger height is 117 cm.

6. FASTEN THE SEAT BELT!

Check the seat belt and shoulder straps.

7. DRIVER AND CHILD SHOULD WEAR A HELMET EVERY TIME THEY RIDE.

8. Handlebar adjustment

Press the buttons on both sides at the same time, and turn the towbar to the appropriate position, then release the buttons.

9. Using the cover**WARNING - INJURY FROM SWIRLING OBJECTS**

Rocks and castoff from the bicycle wheels could injure your child.
Never use the trailer without closing the mesh cover.

The clear vinyl windscreen and the protective mesh barrier zip open for loading. In inclement weather, the clear windscreen protects your passengers from the elements. Weather permitting, you can roll up the clear window and affix with Velcro straps provided. The mesh allows ventilation, but prevents debris from entering the trailer.

If the Quadriga child trailer is used as a bicycle trailer, the weather cover should be closed to prevent dirt and dust from entering the van.

10. Release the parking brake

- Be extremely careful when driving with the trailer.
- Do not exceed the maximum speed of 25 km/h (15 mph).
The speed must be adjusted when cornering or on uneven roads.
- If you turn right, the angle between the train bicycle and the Quadriga child trailer must not exceed 45°.
- If you turn left, the angle must not exceed 90°.
- Note that pulling a trailer will increase the braking distance.
- Always instruct children NOT to jump or lean out.

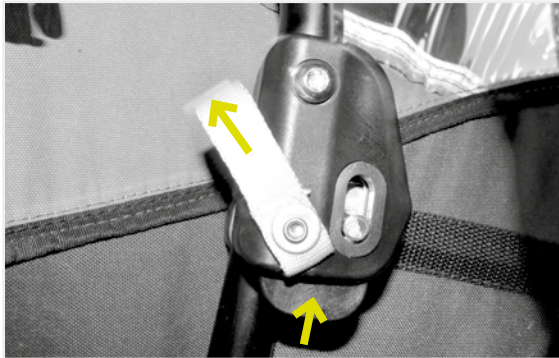
1. Only park your Quadriga child trailer on flat surfaces and secure it with the parking brake.

2. Unload the trailer

Before removing children or loads from the trailer, stop the bicycle and apply the trailer's parking brakes. Then open the passenger compartment window, release the seat belt and let the passengers get out of the trailer. Make sure that the bicycle attached to the trailer does not fall over during loading and unloading.

3. Fold the trailer

To fold your trailer, open the cover of the storage compartment. To release the lock, pull the yellow tab and press the bottom button at the same time. When both sides are unlocked, push forward to fold.



MAINTENANCE AND CARE

- Your trailer will give you many years of service with minimal care. To ensure safe and dependable operation, we recommend the following regular maintenance:
- Have the trailer checked by a qualified bicycle mechanic once a year, or more often if necessary, for signs of wear or necessary adjustments.
- The trailer can be cleaned with mild detergent and water. Do not remove the seat or cover for washing. Do not use aggressive chemicals or detergents as they may damage the fabrics, frame materials or surfaces.



RAIN HOOD

Art.Nr.: 08948-560 - single-seater
Art.Nr.: 08948-565 - two-seater



RAIN COVER

Art.Nr.: 08948-580 - single-seater
Art.Nr.: 08948-585 - two-seater



BABY SEAT

Art.Nr.: 08948-550



WINTER SACK

Art.Nr.: 08948-570



VARIOUS THRU AXLES

Art.Nr.: 08948-590 - M12 x 1
 installation width 174 mm

Art.Nr.: 08948-600 - M12 x 1,5
 installation width 178 mm

Art.Nr.: 08948-610 - M12 x 1,75
 installation width 180 mm

Art.Nr.: 08948-620 - M12 x 1,5
 installation width 229 mm

Art.Nr.: 08948-630 - M12 x 1,75
 installation width 229 mm

DISPOSAL

- The trailer consists of valuable materials. They must be disposed of separately from household waste and recycled in accordance with the applicable statutory regulations.
- Separate collection and recycling protects the raw material reserves and ensures that the recycling of the product and/or all regulations for the protection of health and the environment are complied with.
- The materials are recyclable according to their labelling. Ask the city/community administration for the disposal point responsible for you.
- The packaging material is partially recyclable. Dispose of the packaging in an environmentally friendly manner and return it to the recycling collection. Dispose of it at a public collection point. Ask the city/municipal administration for the disposal point responsible for you.



E-waste do not belong in domestic refuse. As a consumer, you are legally required to return electrical waste professionally at a collection point.

KETTLER Alu-Rad GmbH
Longericher Straße 2
50739 Köln

info@kettler-alu-rad.de
www.kettler-alu-rad.de